

Your Digital Practice

**PLANMECA**



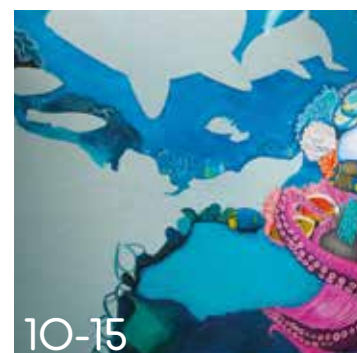
YEARS OF LEADING THE WAY

A collection of bespoke  
Planmeca clinics.

**PLANMECA**



The Campbell Academy



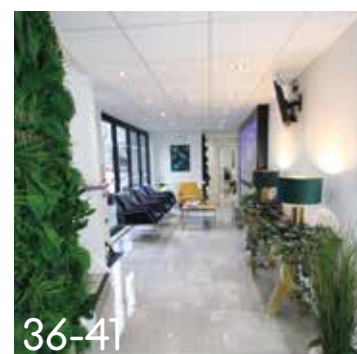
The Orthodontic Specialist



Smileworks Liverpool



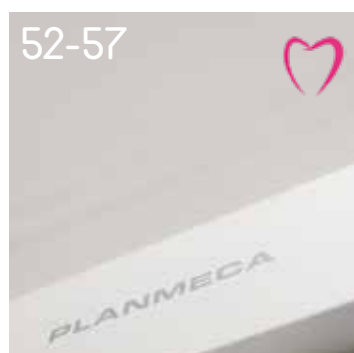
7oaks Clinic



North Cardiff Dental & Implants



Beeston Dental Practice



WeCare Dental



De-lentes Dental



3Beam Imaging Centre



Park View Family Dental



The Dentist Gallery



Other Customers

## Introduction

Bringing together a formidable collection of bespoke Planmeca surgeries Your Digital Practice evokes inspiration from others who have transitioned their practice to digital.

Enabling you to visualise the possibilities, you can experience a showcase of practices highlighting different surgery arrangements using Planmeca's range of digital dentistry solutions.

We hope you find Your Digital Practice a useful resource, helping you start your very own digital dentistry journey with Planmeca.





The Campbell Academy





I love the Planmeca knee break chairs and it is the only chair I would have in clinic. There are many reasons for this, both in terms of space and design, but it's just a much more natural position to discuss things with the patient at the beginning and end of treatment and that is one of the most important reasons.

## Compact i5



One of the many things which is important in non-clinical dentistry and patient communication is the 'power dynamic'. Putting a patient into a seating position with their legs up early into an appointment almost says, "I'm in charge". A knee break chair is a much more neutral and equal way to communicate with a patient which is why I think it is so valuable.

**Colin Campbell**  
Clinical Director

**Customer:** The Campbell Academy

**Product:** Planmeca Compact i5

**Supplied by:** DB Dental



**Customer:** The Campbell Academy  
**Product:** Planmeca ProMax 3D Classic  
**Supplied by:** DB Dental



ProMax 3D Classic







## The Orthodontic Specialist

---





The thing I like the most about Planmeca is the comfort that it provides for the patients. We've got the memory foam chairs, every time somebody sits in them, they always comment how comfortable it is.

The second important thing for the practice was to have a knee break in the chair so I can turn the chair into a proper seat rather than a dental chair, so that I can talk to my patients during my consultations.

Compact i

**Customer:** The Orthodontic Specialist  
**Product:** Planmeca Compact i Classic  
**Supplied by:** JGS Dental





It is really important for us to have a CBCT on site, it makes it easier for our patients to have all diagnostics done in one go and in one location. It also allows us to diagnose very quickly what the patient might need and we can go through the scan with the patient.

**Komal Suri**  
Co Owner & Director

# ProMax 3D Classic

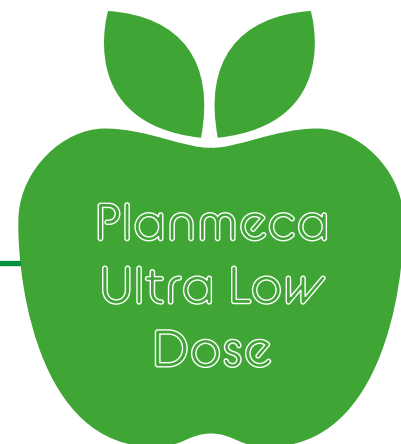
**Customer:** The Orthodontic Specialist

**Product:** Planmeca ProMax 3D Classic

**Supplied by:** JGS Dental

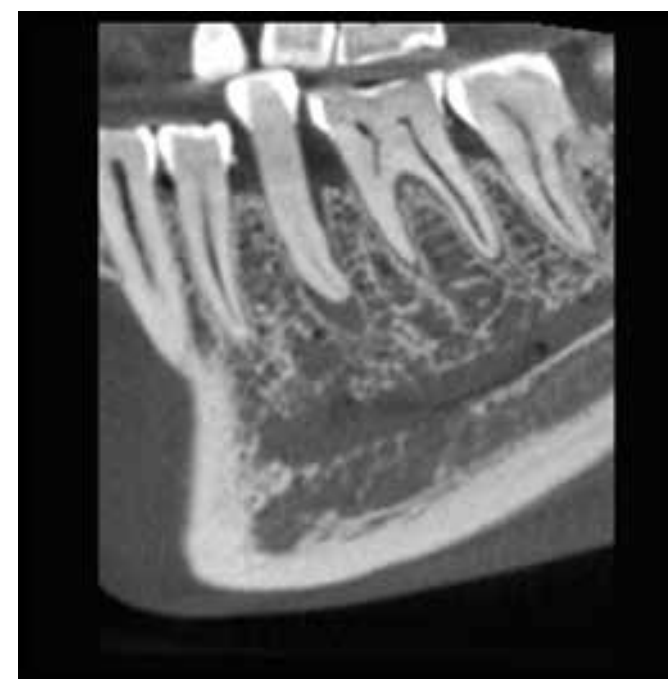






All our CBCT units include Planmeca Ultra Low Dose – a proprietary low dose 3D imaging protocol that enables CBCT imaging with an even lower patient radiation dose than standard panoramic imaging.

Using the Planmeca Ultra Low Dose 3D imaging protocol is as simple as pressing a button. You can easily select it from the control panel of the X-ray unit – with the patient dose for the image immediately visible for full transparency.



HD resolution



HD resolution with  
Ultra Low Dose

## 3D Dental Imaging Features

Scan the QR code  
to learn more

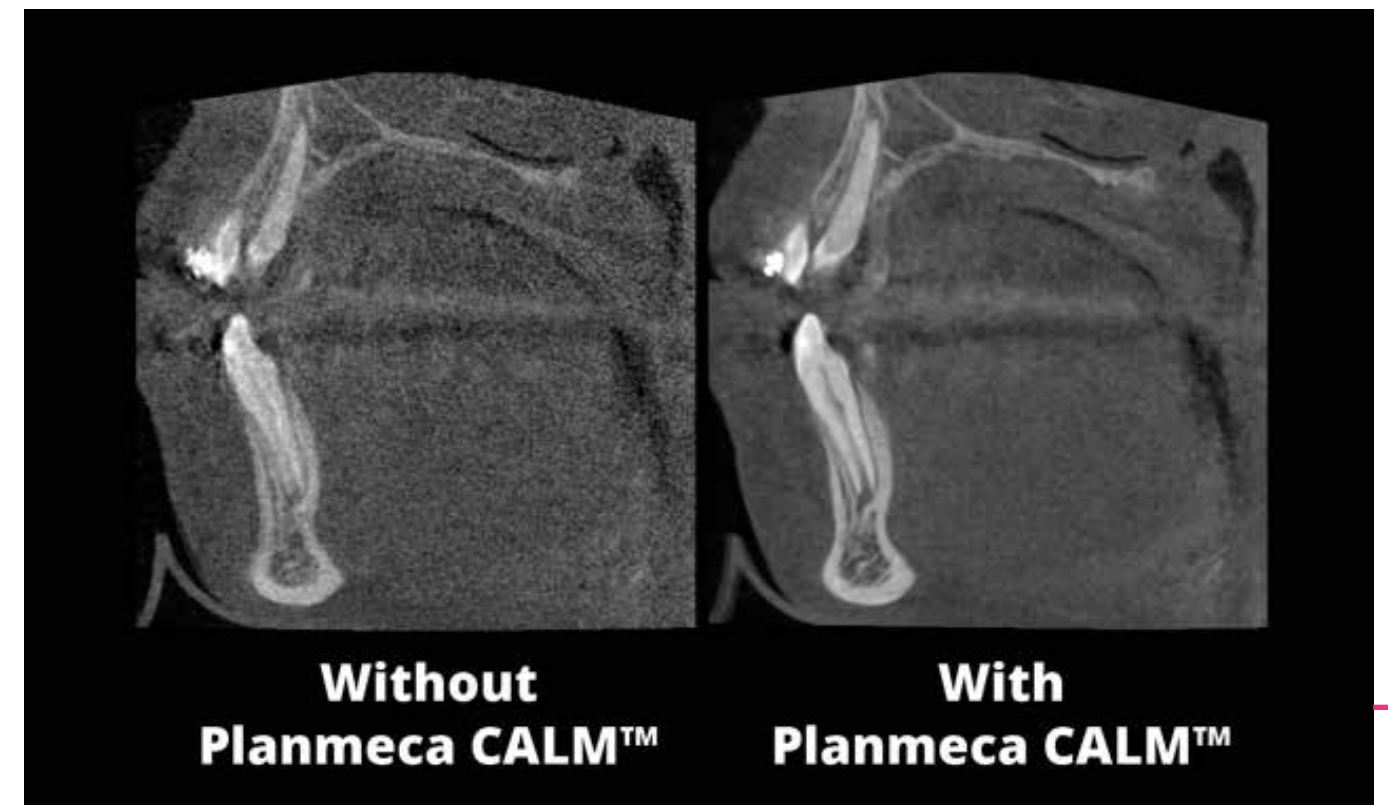




# Planmeca CALM

As the first ever end-user solution for patient movement artifact correction in the dental industry, the Planmeca CALM algorithm not only saves time but also guards patients from unnecessary exposures.

Patient movement artifacts are among the most significant challenges to CBCT image quality. When a patient moves during imaging, it produces artifacts that affect the quality of the image. Planmeca CALM cancels the effects caused by this movement and allows clinicians to succeed every time.



## 3D Dental Imaging Features

Scan the QR code  
to watch the video





## Smileworks



Scan the QR code  
to read the article



In 2019, our team has grown from 2 to 35 and we have doubled in size twice, achieving maximum growth of six dental surgeries and two aesthetic treatment rooms. The practice is airline-themed, reflecting a luxury travel vibe. We have unique titanium-alloy jet-desks at reception, crafted from parts of a Tornado Fighter jet, airline drinks carts, branded upholstery on our original airline seats in the waiting room and porthole style picture frames.





At Smileworks we are early adopters and use a state of the art practice management software called MacPractice. Of the companies that offered compatible imaging technologies, Planmeca came out on top in terms of compatibility. Their solutions integrate seamlessly with MacPractice via an imaging bridge, which means we run only one software system.

## ProMax 3D Classic



We had previously found that Planmeca was great for the sensors and CBCT equipment and as we already had a relationship with them, we considered their chairs for our expansion. We were impressed with the quality – the latest developments are not only user-friendly and technologically advanced, but also really comfortable for patients whilst being extremely cost effective.

**Customer:** Smileworks

**Product:** Planmeca ProMax 3D Classic

**Supplied by:** Digital Dental





We are therefore now an all-Planmeca practice. We were the first practice in the UK to have the new Planmeca Compact i5 dental units installed and we love them. Their small footprint and upright entry make for much better patient interaction. Consultations, discussions with patients, impressions, photographs – it's all so much easier with the knee-break type of chair.



In addition, James – our Planmeca sales representative – has been nothing short of fantastic. He is reliable, knowledgeable and efficient. From our first point of contact, we've always had great support and still have catch-ups to make sure everything is working as it should and discuss aftercare.

**MJ Rowland-Warman**  
Principal of Smileworks Liverpool

Compact i5

**Customer:** Smileworks  
**Product:** Planmeca Compact i5  
**Supplied by:** DB Dental



## 7oaks Clinic

---



Opening hours  
Monday 9.00am - 5.00pm  
Tuesday 9.00am - 3.00pm  
Wednesday 9.00am - 5.00pm  
Thursday 9.00am - 5.00pm  
Friday 9.00am - 5.00pm  
At Our House 111, 112, 113, 114, 115, 116, 117, 118, 119, 120, 121, 122, 123, 124, 125, 126, 127, 128, 129, 130, 131, 132, 133, 134, 135, 136, 137, 138, 139, 140, 141, 142, 143, 144, 145, 146, 147, 148, 149, 150, 151, 152, 153, 154, 155, 156, 157, 158, 159, 160, 161, 162, 163, 164, 165, 166, 167, 168, 169, 170, 171, 172, 173, 174, 175, 176, 177, 178, 179, 180, 181, 182, 183, 184, 185, 186, 187, 188, 189, 190, 191, 192, 193, 194, 195, 196, 197, 198, 199, 200, 201, 202, 203, 204, 205, 206, 207, 208, 209, 210, 211, 212, 213, 214, 215, 216, 217, 218, 219, 220, 221, 222, 223, 224, 225, 226, 227, 228, 229, 230, 231, 232, 233, 234, 235, 236, 237, 238, 239, 240, 241, 242, 243, 244, 245, 246, 247, 248, 249, 250, 251, 252, 253, 254, 255, 256, 257, 258, 259, 260, 261, 262, 263, 264, 265, 266, 267, 268, 269, 270, 271, 272, 273, 274, 275, 276, 277, 278, 279, 280, 281, 282, 283, 284, 285, 286, 287, 288, 289, 290, 291, 292, 293, 294, 295, 296, 297, 298, 299, 300, 301, 302, 303, 304, 305, 306, 307, 308, 309, 310, 311, 312, 313, 314, 315, 316, 317, 318, 319, 320, 321, 322, 323, 324, 325, 326, 327, 328, 329, 330, 331, 332, 333, 334, 335, 336, 337, 338, 339, 340, 341, 342, 343, 344, 345, 346, 347, 348, 349, 350, 351, 352, 353, 354, 355, 356, 357, 358, 359, 360, 361, 362, 363, 364, 365, 366, 367, 368, 369, 370, 371, 372, 373, 374, 375, 376, 377, 378, 379, 380, 381, 382, 383, 384, 385, 386, 387, 388, 389, 390, 391, 392, 393, 394, 395, 396, 397, 398, 399, 400, 401, 402, 403, 404, 405, 406, 407, 408, 409, 410, 411, 412, 413, 414, 415, 416, 417, 418, 419, 420, 421, 422, 423, 424, 425, 426, 427, 428, 429, 430, 431, 432, 433, 434, 435, 436, 437, 438, 439, 440, 441, 442, 443, 444, 445, 446, 447, 448, 449, 450, 451, 452, 453, 454, 455, 456, 457, 458, 459, 460, 461, 462, 463, 464, 465, 466, 467, 468, 469, 470, 471, 472, 473, 474, 475, 476, 477, 478, 479, 480, 481, 482, 483, 484, 485, 486, 487, 488, 489, 490, 491, 492, 493, 494, 495, 496, 497, 498, 499, 500, 501, 502, 503, 504, 505, 506, 507, 508, 509, 510, 511, 512, 513, 514, 515, 516, 517, 518, 519, 520, 521, 522, 523, 524, 525, 526, 527, 528, 529, 530, 531, 532, 533, 534, 535, 536, 537, 538, 539, 540, 541, 542, 543, 544, 545, 546, 547, 548, 549, 550, 551, 552, 553, 554, 555, 556, 557, 558, 559, 560, 561, 562, 563, 564, 565, 566, 567, 568, 569, 570, 571, 572, 573, 574, 575, 576, 577, 578, 579, 580, 581, 582, 583, 584, 585, 586, 587, 588, 589, 590, 591, 592, 593, 594, 595, 596, 597, 598, 599, 600, 601, 602, 603, 604, 605, 606, 607, 608, 609, 610, 611, 612, 613, 614, 615, 616, 617, 618, 619, 620, 621, 622, 623, 624, 625, 626, 627, 628, 629, 630, 631, 632, 633, 634, 635, 636, 637, 638, 639, 640, 641, 642, 643, 644, 645, 646, 647, 648, 649, 650, 651, 652, 653, 654, 655, 656, 657, 658, 659, 660, 661, 662, 663, 664, 665, 666, 667, 668, 669, 670, 671, 672, 673, 674, 675, 676, 677, 678, 679, 680, 681, 682, 683, 684, 685, 686, 687, 688, 689, 690, 691, 692, 693, 694, 695, 696, 697, 698, 699, 700, 701, 702, 703, 704, 705, 706, 707, 708, 709, 710, 711, 712, 713, 714, 715, 716, 717, 718, 719, 720, 721, 722, 723, 724, 725, 726, 727, 728, 729, 730, 731, 732, 733, 734, 735, 736, 737, 738, 739, 740, 741, 742, 743, 744, 745, 746, 747, 748, 749, 750, 751, 752, 753, 754, 755, 756, 757, 758, 759, 760, 761, 762, 763, 764, 765, 766, 767, 768, 769, 770, 771, 772, 773, 774, 775, 776, 777, 778, 779, 780, 781, 782, 783, 784, 785, 786, 787, 788, 789, 790, 791, 792, 793, 794, 795, 796, 797, 798, 799, 800, 801, 802, 803, 804, 805, 806, 807, 808, 809, 810, 811, 812, 813, 814, 815, 816, 817, 818, 819, 820, 821, 822, 823, 824, 825, 826, 827, 828, 829, 830, 831, 832, 833, 834, 835, 836, 837, 838, 839, 840, 841, 842, 843, 844, 845, 846, 847, 848, 849, 850, 851, 852, 853, 854, 855, 856, 857, 858, 859, 860, 861, 862, 863, 864, 865, 866, 867, 868, 869, 870, 871, 872, 873, 874, 875, 876, 877, 878, 879, 880, 881, 882, 883, 884, 885, 886, 887, 888, 889, 890, 891, 892, 893, 894, 895, 896, 897, 898, 899, 900, 901, 902, 903, 904, 905, 906, 907, 908, 909, 910, 911, 912, 913, 914, 915, 916, 917, 918, 919, 920, 921, 922, 923, 924, 925, 926, 927, 928, 929, 930, 931, 932, 933, 934, 935, 936, 937, 938, 939, 940, 941, 942, 943, 944, 945, 946, 947, 948, 949, 950, 951, 952, 953, 954, 955, 956, 957, 958, 959, 960, 961, 962, 963, 964, 965, 966, 967, 968, 969, 970, 971, 972, 973, 974, 975, 976, 977, 978, 979, 980, 981, 982, 983, 984, 985, 986, 987, 988, 989, 990, 991, 992, 993, 994, 995, 996, 997, 998, 999, 1000.





We chose Planmeca equipment due to seamless technology and integrated compliance monitoring systems, along with the exceptionally modern design. The use of Intra-oral scanning with our Emerald scanner also offers a multitude of possibilities in diagnostics, implant planning, and restoration production using our Planmeca PlanMill.



Compact i5



Customer: 7oaks

Product: Planmeca Compact i5

Supplied by: JGS Dental



# ProMax 3D Classic



The Planmeca CBCT, along with the Romexis technology, allows for exceptional low dose CBCT diagnostics together with excellent cross over to CAD/CAM scanning. The addition of the ProFace option offers our practice another dimension of diagnostics and patient communication. Romexis software brings together all of our imaging into one suite of software allowing seamless use of the data we collect to provide an exceptional level of patient care.

Dr Gary Moynes  
Clinic Director

**Customer:** 7oaks  
**Products:** Planmeca ProMax 3D Classic, Emerald, ProX, ProScanner 2.0, PlanFIT System  
**Supplied by:** JGS Dental



ProScanner 2.0



PlanMill 30 S

Designed to last, made to perform

The sleek and distinctive design of the Planmeca Compact i5 dental unit has been created to stand the test of time. Our product development is always guided by what we believe contributes to good design – ergonomics, safety, comfort, and aesthetics.

Compact i5

i5

Scan the QR code  
to learn more





# Solanna Vision

Intelligent light for brighter workdays

Planmeca Solanna Vision is not only a state-of-the-art operating light, but also an advanced data centre. It is an intelligent operating light with two fully integrated 4K cameras, a digital zoom and integrated microphones.

With Planmeca Solanna Vision, you can take premium-quality still images and videos. You can record treatment sessions and use these recordings e.g. to educate your patients, to consult with your colleagues or to document treatment information.



Two integrated 4K cameras  
Take still images and videos easily  
Smoother and faster workflow  
Exceptional image quality  
Brightness and colour of your choice

Scan the QR code  
to watch the video







We're really proud to be associated with Planmeca and really thankful to have had the support we've had so far. We started off as a single surgery and have added two more chairs in the last eighteen months. I wholeheartedly feel that our work with Planmeca, the quality of equipment and the quality of support we've had in this time has really allowed us to grow.

## North Cardiff Dental & Implants





As someone who dedicates all of their clinical time to implant dentistry, I can't work without one nowadays. I've worked in practices where I've had to refer patients away for these scans and the real issue is, not just the fact it's a massive inconvenience to the patient, it's that we don't have control over the quality of images that are being produced or the amount of radiation being used to create these images.



One of the reasons I really love having the ProMax CBCT is the Ultra Low Dose mode, patients are becoming much more wary of radiation and especially with our consent forms that talk about radiation doses and why we're taking a CBCT.

I take great comfort in the fact that we know our justification is there, we're using the least amount of radiation possible to produce diagnostic images. So we're getting three dimensional images for less radiation than a lot of two dimensional images which is amazing.

**Customer:** North Cardiff Dental & Implants  
**Product:** Planmeca ProMax 3D Classic

ProMax 3D Classic





The great thing about the knee-break chairs is the patient can sit up right and communicate as they would in a non clinical setting. It's a huge space saver within the surgery but also means they enter a non threatening environment.



A comment we get a lot by our patients is how comfortable these chairs are. We're doing a lot of complex multidisciplinary care meaning the patients might need to be in the chair for a long time, so the patient needs to be comfortable for a couple of hours.



Having people of different sizes in the chair and the adaptability of the headrest means we can adapt the same chair to be comfortable for everybody. Which makes our posture and our lives a lot easier.

**Dr Aly Virani**  
Implant Dentist & Clinical Director

Compact i5

**Customer:** North Cardiff Dental & Implants

**Product:** Planmeca Compact i5

**Supplied by:** JGS Dental





I decided to refurbish Beeston Dental Practice for several reasons. Firstly, I wanted to create a grand entrance to the building and introduce more light and space in the reception. Secondly, I was keen to support the private conversion of an associate dentist, and invest in new technology that could facilitate our growing dental implant business.

## Beeston Dental Practice





Customer: Beeston Dental  
 Product: Planmeca ProMax 3D Classic  
 Supplied by: DB Dental

Scan the QR code  
 to read the article



beestondental  
 beestondental

Monday to Wednesday 9 00 - 19 00  
 Thursday 8 00 - 19 00  
 Friday 9 00 - 17 00

Tel: 0115 9254169  
[www.beestondentalpractice.co.uk](http://www.beestondentalpractice.co.uk)

Dr. C. J. Navarro  
 BDS MFGDP  
 Dental Surgeon

Dr. N. Dayaram  
 BSc (Hons.) BDS MFDS (RCS Ed) PGD  
 Dental Surgeon





We sourced a ProMax 3D Classic CBCT machine and an Emerald intraoral scanner from Planmeca, who was very helpful before and after the renovation was completed. I chose the ProMax 3D Classic based on the fact that it offers Planmeca's proprietary Ultra Low Dose imaging protocol. This facilitates 3D imaging at an even lower patient radiation dose than standard 2D panoramic imaging, which is an important factor in the treatment of patients at my practice.

Chris Navarro  
Principal Dentist



Customer: Beeston Dental  
Product: Planmeca Compact i5  
Supplied by: DB Dental



# Emerald S

Planmeca Emerald S offers premium, top of the line intraoral scanning speeds in all situations. The lightning fast scanner can perform tasks efficiently and a capable user will scan an entire arch in well under a minute – significantly faster than ever before.

- Elite scanning speed
- Sleek and slim design
- Unmatched precision
- Tips for diverse needs
- Easy imports and exports
- True digital comfort
- Full chairside integration

Scan the QR code  
to watch the video





# PlanMill 30 S

- High-quality dental milling
- Automated tool changing
- Easy usability
- Versatile dental milling
- Full chairside integration

## PlanMill 30 S

Planmeca PlanMill 30 S is able to handle a wide range of dental milling materials. The unit's rotary axis enables milling both sides of a block with the same high-speed spindle and its linear motors and smart tool paths guarantee high-quality restorations that fit precisely.

Scan the QR code  
to watch the video







WeCare Dental

---

PLANMECA





Our Planmeca Romexis Smile Design digital smile design software is ideal for simulating smiles and helping us plan treatments very precisely. This incredible dental technology lets us use a normal photo to show you, our patients, a digital version of what your perfect smile could look like – always beautiful and natural. And then we can make it for you.

## Compact i5

**Customer:** WeCare Dental

**Product:** Planmeca Compact i5

**Supplied by:** JGS Dental



No more messy impressions! Our Planmeca digital scanner eliminates the need to take impressions. So we offer a much more comfortable experience for you, our patient. Using top-of-the-line scanning speeds the digital scanner is able to scan an entire arch in less than a minute. So it's super-fast, with no discomfort.

Scan the QR code  
to read the article







When we need a clear image of your mouth, we use nothing but the best. At WeCare, our ultra-advanced new Planmeca ProMax CBCT scanner gives the highest-quality 2D and 3D imaging, using the remarkable new dental technology known as Planmeca Ultra Low Dose imaging protocol.

**Dr Morne Williams**  
Founding member of WeCare Dental Surgery

**Customer:** WeCare Dental

**Product:** Planmeca ProMax 3D Classic

**Supplied by:** JGS Dental

ProMax 3D Classic







# Planmeca Romexis

Comprehensive dental software

Planmeca Romexis is the most powerful dental software platform in the world. It offers a rich selection of tools and features for all needs and specialties. Romexis brings together all Planmeca equipment at a dental clinic – from CAD/CAM technology to imaging devices and dental units.

Scan the QR code  
to watch the video







De-ientes Dental



## Sovereign Classic



We researched a few different manufacturers when it came to sourcing imaging equipment and dental units in order to find the best deal. In the end, our existing relationship with Planmeca and our confidence in the quality of their products led us to stick with them for this project.

Scan the QR code  
to read the article



**Customer:** De-ientes Dental  
**Product:** Planmeca Sovereign Classic  
**Supplied by:** JGS Dental



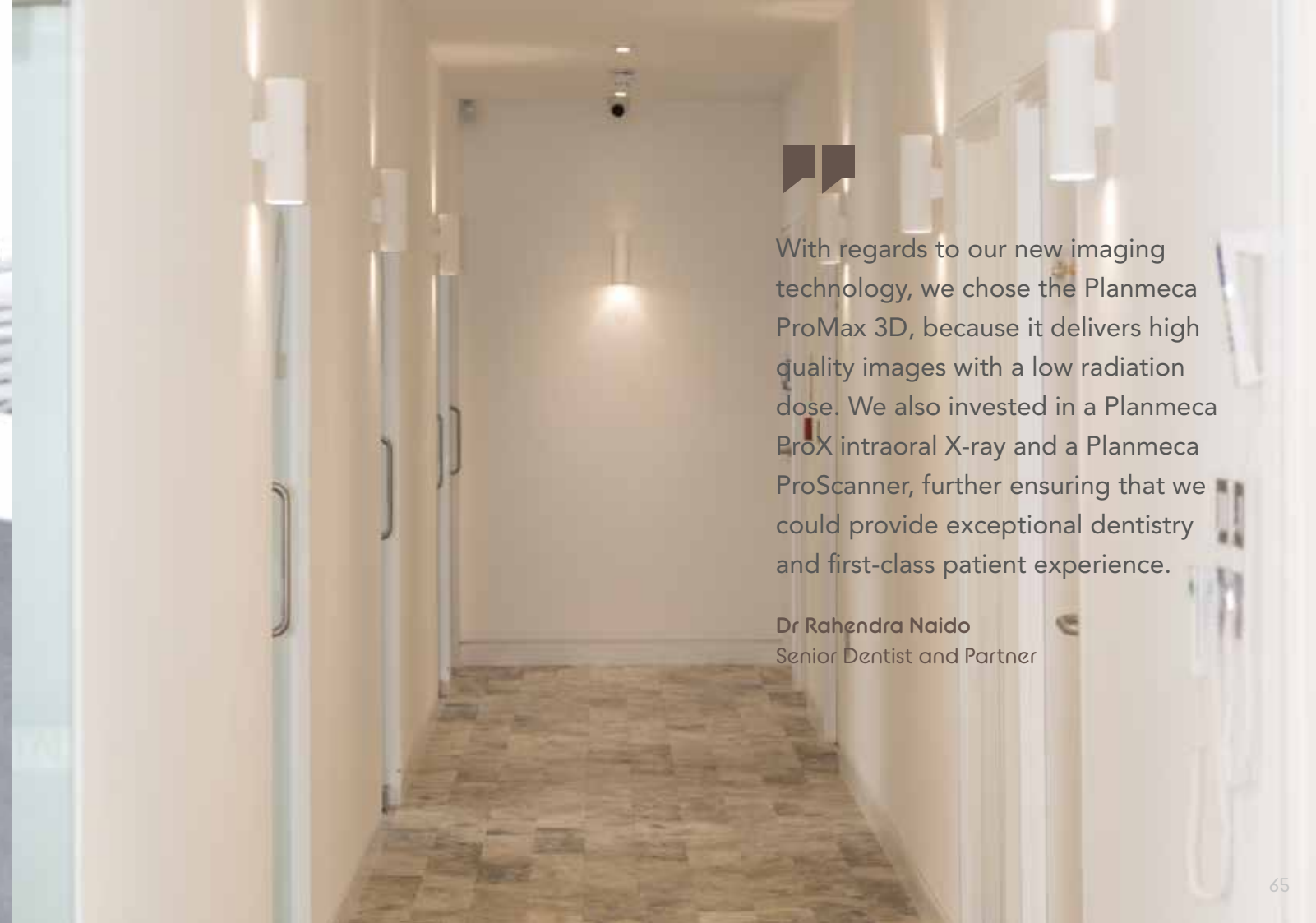


We purchased three different dental units - the Planmeca Sovereign Classic, Planmeca Compact i Classic and Planmeca Compact i5 - otherwise affectionately known to us as the 'Ferrari' dental chair. The latter provided an all-singing, all-dancing dental unit that aligned with our passion to deliver the very highest standard of dentistry.



With regards to our new imaging technology, we chose the Planmeca ProMax 3D, because it delivers high quality images with a low radiation dose. We also invested in a Planmeca ProX intraoral X-ray and a Planmeca ProScanner, further ensuring that we could provide exceptional dentistry and first-class patient experience.

Dr Rahendra Naido  
Senior Dentist and Partner







## 3Beam Imaging Centre





We use the latest technology to ensure your visit is as safe as possible. Our Planmeca ProMax 3D Mid CBCT scanner is a high-tech and modern imaging machine, capable of producing incredibly detailed internal views of the mouth and jaws.



Here at 3Beam we have invested in a ProMax with Planmeca CALM, a movement correction algorithm. It eliminates the need for retakes by cancelling the effects of patient movement.

Ashir Patel  
CQC registered manager at 3Beam

## ProMax 3D Classic



**Customer:** 3Beam Imaging Centre  
**Product:** Planmeca ProMax 3D Classic  
**Supplied by:** Dental Dynamix



# ProMax 3D Classic

## Volume sizes

Capture a clear view of the mandible and maxilla

Our Planmeca ProMax 3D Classic unit covers the entire dentition – making it an excellent option for full arch dental 3D imaging needs.

**Maximum volume with a single scan**

Ø8 x 8 cm

**Extended volume with a single scan**

Ø11 x 8 cm

**Maximum volume with multiple horizontal scans**

15 x 10 x 8 cm





## Park View Dental

---





# Compact i5

Customer: Park View Dental  
Product: Planmeca Compact i Classic  
Supplied by: JGS Dental



It was important to me that all the technology I purchased would integrate seamlessly, so I preferred to purchase from a single system/manufacturer. I was also keen to ensure that there would be no hidden monthly charges for maintenance etc. as these fees make equipment much more expensive than they initially seem.



I decided to proceed with Planmeca because it has a good, reputable name, with affordable yet high quality technologies. I had worked with them many times before and, while I did compare technologies across the market, I was most confident in the quality and reliability of products from Planmeca.



Scan the QR code to read the article





In the end, I invested in an Emerald Next-Gen Intraoral Scanner, a PlanMill 40 S milling unit and a ProFace CBCT, from Planmeca. The project itself proceeded smoothly with no real challenges.

**Jennifer Owen**  
Owner of Park View Family Dental

ProMax 3D Classic



**Customer:** Park View Dental  
**Product:** Planmeca Emerald & PlanMill 40, ProMax 3D Classic  
**Supplied by:** JGS Dental





The Dentist Gallery





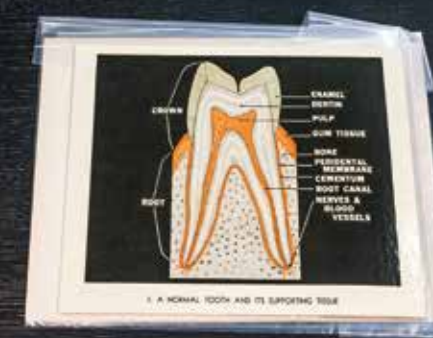
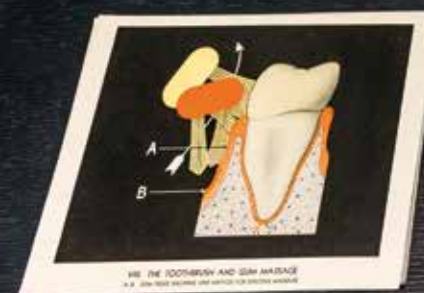
Two creative dentists have combined their specialised expertise, creative minds and real passion for aesthetics. The result is a clinic that transforms patient's experiences of dentistry.



**Customer:** The Dentist Gallery  
**Product:** Planmeca Prostyle Compact  
**Supplied by:** PW Dental Engineering



The aim is to surround patients with beautiful things, which can have a positive effect on both their mental and physical state and relieve stress that can be related to visiting a dentist.

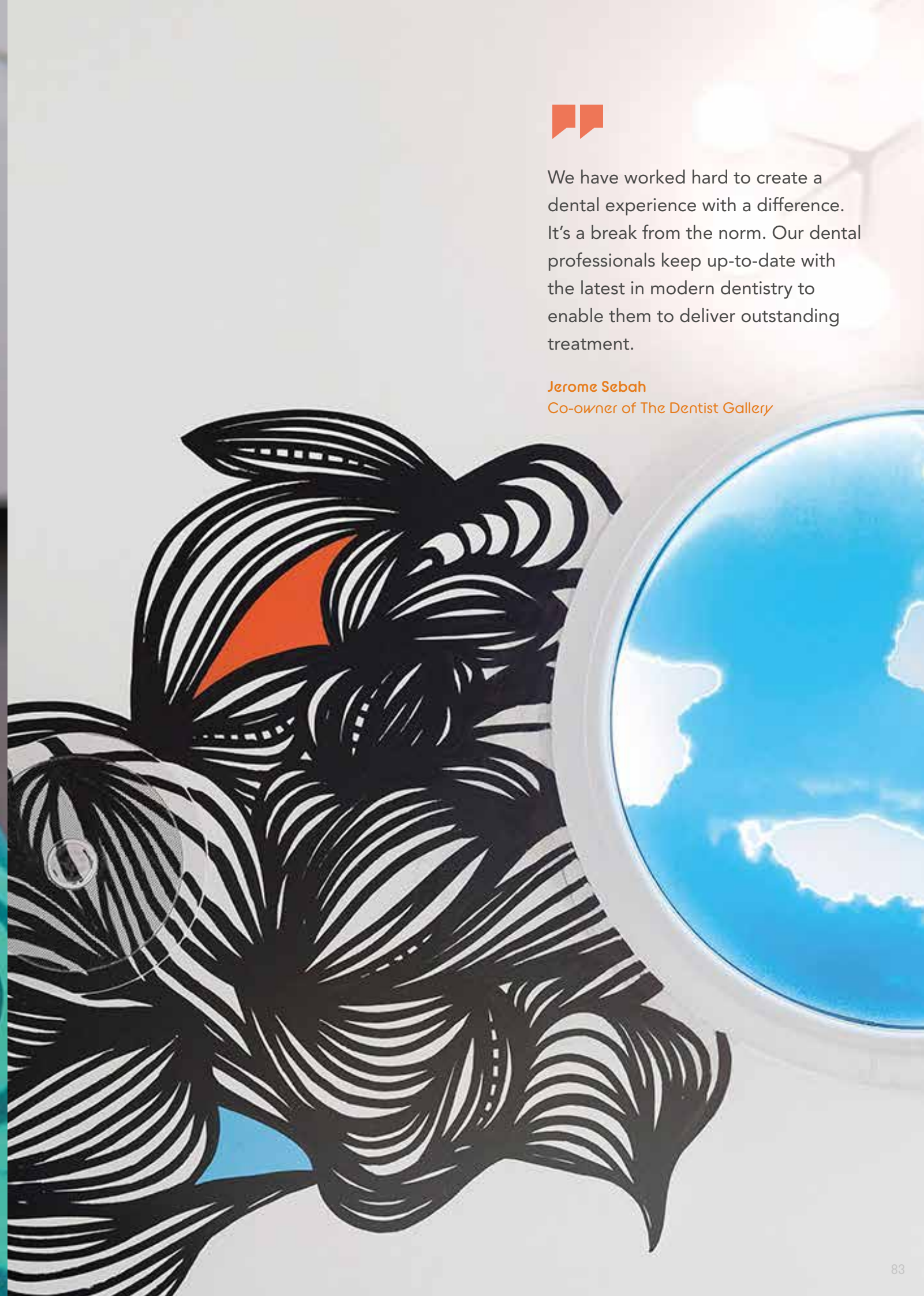






We have worked hard to create a dental experience with a difference. It's a break from the norm. Our dental professionals keep up-to-date with the latest in modern dentistry to enable them to deliver outstanding treatment.

**Jerome Sebah**  
Co-owner of The Dentist Gallery











# Feeling inspired?

## Start your digital journey today!



List out your digital dentistry requirements for your PlanDemo visit ready to start your digital journey!



3D Imaging

Planmeca Pro/Max 3D S ☐  
 Planmeca Pro/Max 3D Classic ☐  
 Planmeca Pro/Max 3D Plus ☐  
 Planmeca Pro/Max 3D /Mid ☐  
 Planmeca Viso G5/G3 ☐



Panoramic Imaging

Pro/Max 2D S3 ☐  
 Planmeca Pro/Max 2D S2 ☐  
 Planmeca ProOne ☐



IntraOral Imaging

Planmeca ProX ☐  
 Planmeca ProSensor HD ☐  
 Planmeca ProScanner 2.0 ☐



Software

Clinic Management ☐  
 2D Imaging ☐  
 3D Imaging ☐  
 CAD/CAM ☐  
 Romexis Cloud ☐



CAD/CAM

Planmeca Emerald S ☐  
 Planmeca Plan/Mill 30 S ☐  
 Planmeca Plan/Mill 40 S ☐



Dental Units

Planmeca Compact I5 ☐  
 Planmeca Compact I Classic ☐  
 Planmeca Compact I3 ☐

Scan here to book your PlanDemo visit  
 or email [marketinguk@planmeca.com](mailto:marketinguk@planmeca.com)







0800 5200 330  
MARKETINGUK@PLANMECA.COM  
PLANMECA.COM